

Artwork Template

Item: PBMM
 Size: 4.4467" w x 7.1967" h
 Imprint Area: 2.875" w x 5" h (each side)
 Shape: RECTANGLE
 Stock Art:

STOCK IMPRINT COLORS

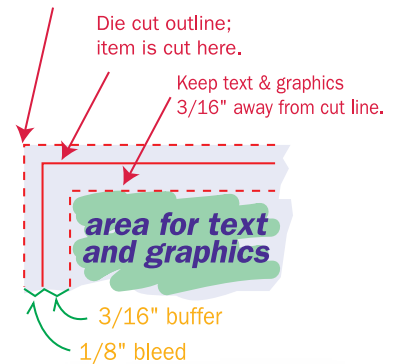
RED	ORANGE	LIGHT ORANGE	YELLOW
LIME	GREEN	FOREST GREEN	TEAL
PURPLE	PLUM	BURGUNDY	MAGENTA
CYAN	BLUE	ROYAL	NAVY
BROWN	WARM GRAY	BLACK	

Colors appear differently on computer monitors & personal laser printers than they will on the final product. **Please request a color proof whenever colors are critical.**

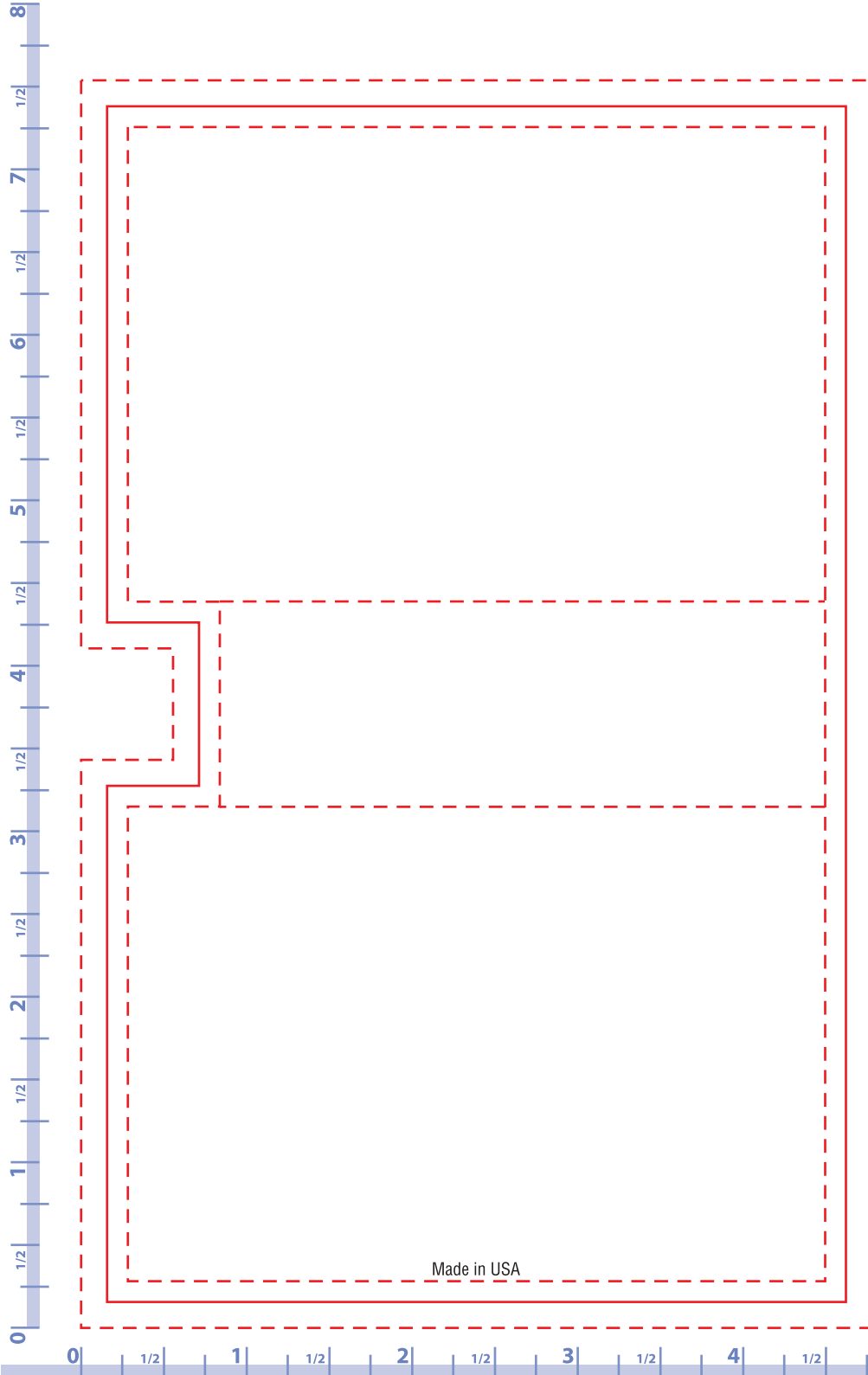
FLOOD COATS - 10% to 30% tints are recommended.
 PHANTOMS - 6% -10% tints work best in most situations. Please note that text often becomes illegible when printed as a phantom.

STANDARD STICKY NOTE PAD DIE LINES

For bleeds ADD 1/8" outside die cut outline.



see pages 2 & 3 for additional imprint information



Artwork Template

Item: P4A3A50
 Size: 4" wide x 3" high
 Imprint Area: 3.625" wide x 2.625" high
 Shape: RECTANGLE
 Stock Art:

STOCK IMPRINT COLORS

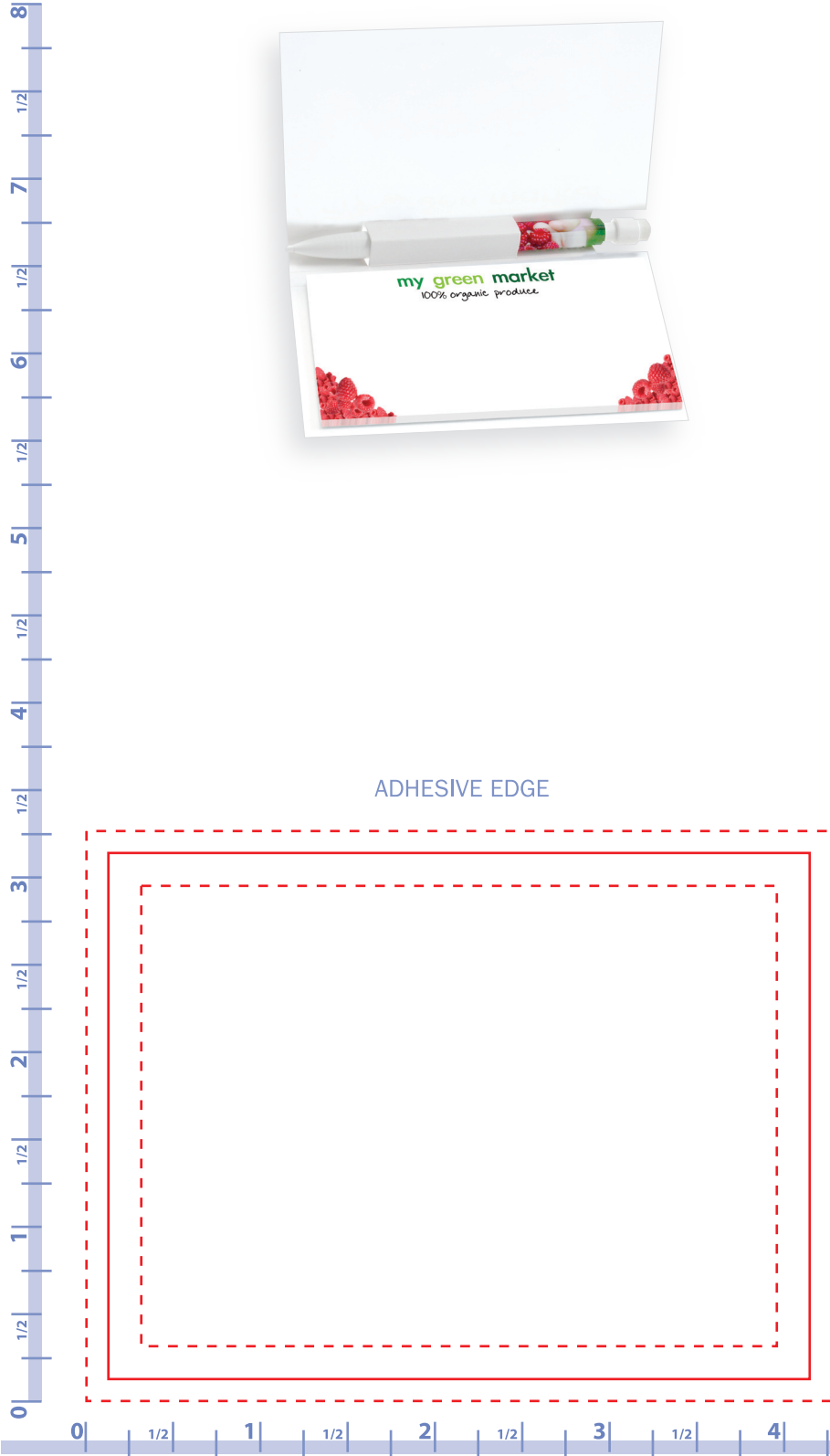
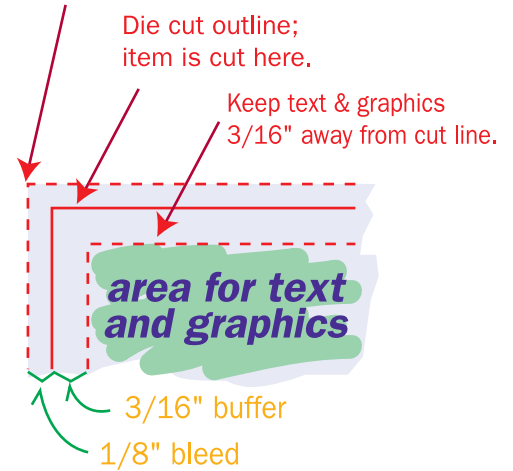
RED	ORANGE	LIGHT ORANGE	YELLOW
LIME	GREEN	FOREST GREEN	TEAL
PURPLE	PLUM	BURGUNDY	MAGENTA
CYAN	BLUE	ROYAL	NAVY
BROWN	WARM GRAY	BLACK	

Colors appear differently on computer monitors & personal laser printers than they will on the final product. **Please request a color proof whenever colors are critical.**

FLOOD COATS - 10% to 30% tints are recommended.
 PHANTOMS - 6% -10% tints work best in most situations. Please note that text often becomes illegible when printed as a phantom.

STANDARD STICKY NOTE PAD DIE LINES

For bleeds ADD 1/8" outside die cut outline.





UPDATE
04-Feb-09

Item #: DCPMRM
 Description: Digital Mini Mechanical Pencil
 Image Area: 2.7" x 1.07"
 Text Area: approx: 2.250" x .657 "

* Theme background art can be found on the BIC website.

Artwork Template

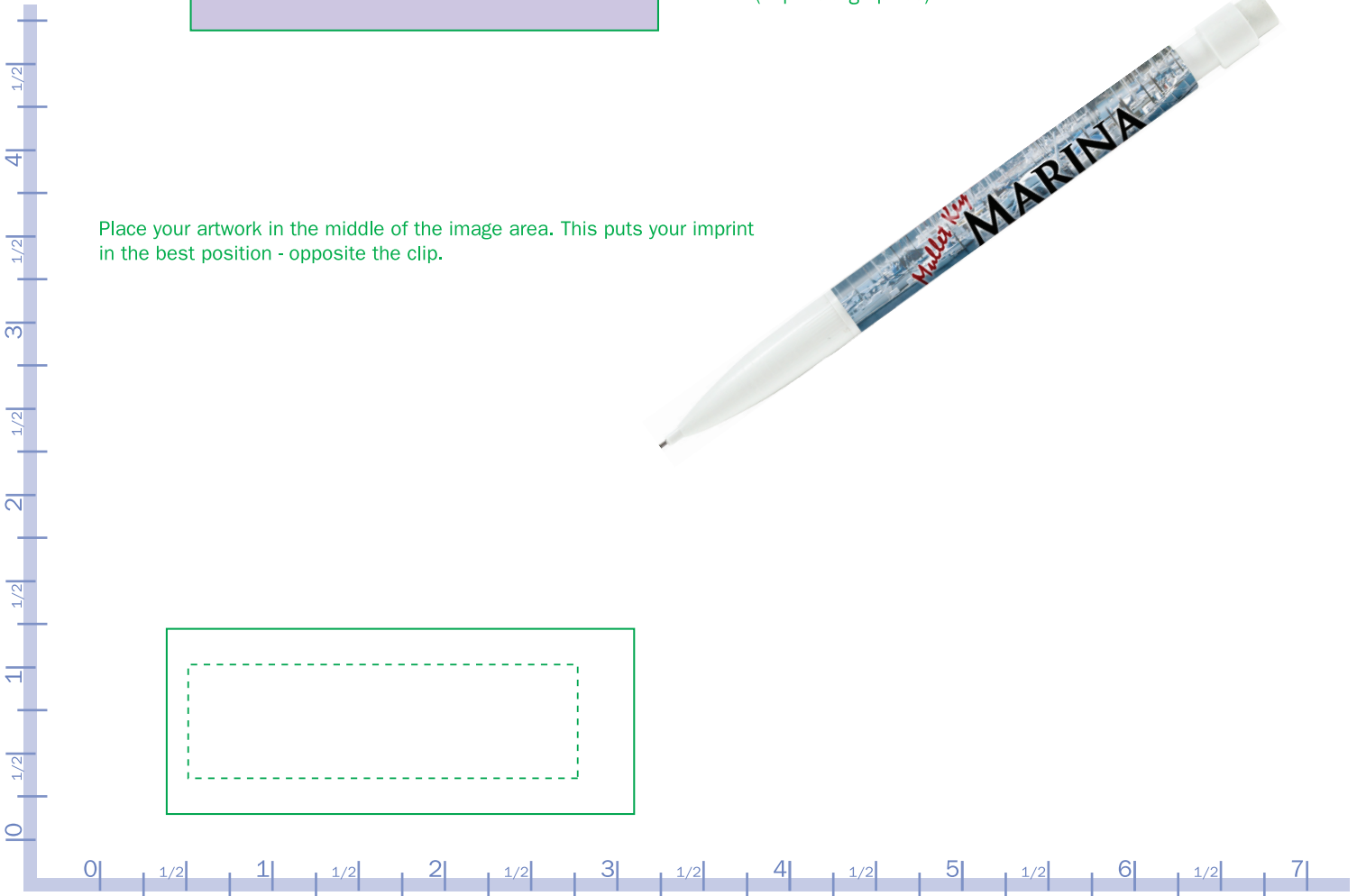
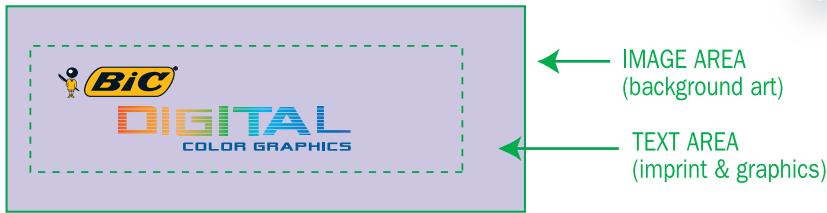
STOCK IMPRINT COLORS

BLACK	BROWN	BURGUNDY	PURPLE	PINK	PROCESS BLUE
GREEN	CREAM	FOREST GREEN	TEAL	RED	ROYAL BLUE
ORANGE	MAROON	NAVY	YELLOW	REFLEX BLUE	CHARCOAL



IMPRINT AREA vs. TEXT AREA

The clip covers a small portion of the cap or barrel. All graphic elements (logos, text) that are not part of the background should stay inside the TEXT AREA (dashed lines) so that they are not covered by the clip.



Place your artwork in the middle of the image area. This puts your imprint in the best position - opposite the clip.



RULER IS IN INCHES. VERIFY RULER ACCURACY ONCE PRINTED OUT ONTO PAPER.